

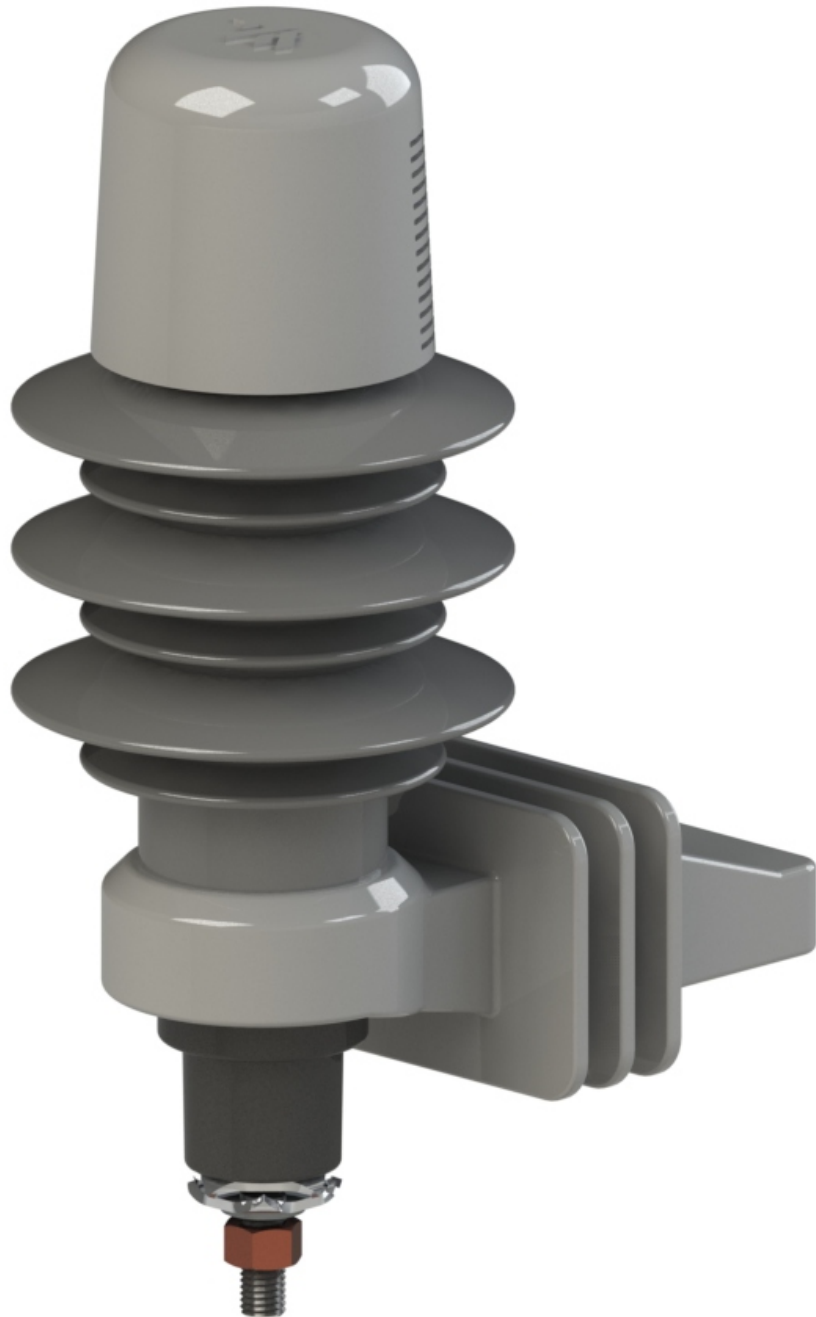


ALUMA-FORM®

Distribution Arresters

Heavy Duty & Riser Pole Arresters

- Tested to the latest IEEE C62.11 standards
- High Strength Fiberglass Isolator Brackets
- Ground Lead Disconnect will operate with a minimum of 1 amp
- Protective Cap





ALUMA-FORM®

Distribution Arresters

Heavy Duty & Riser Pole Arresters

*Best in class design. Complete offering has passed the latest ANSI/IEEE standards and are **RUS approved**.*

Our arrester terminal options include Stainless steel stud, washers, and wire clamps with silicon bronze nut.

The stainless steel protective cap wrap around design protects the top edge of the insulator and provides an area for the arrester's specifications to be engraved.

The aluminum alloy electrode is threaded, glued, and pinned into the tube structure. Benefits are:

- *Eliminates extreme pressure spikes during surges.*
- *Resists rotation from tightening hardware.*
- *Prevents movement from vibration and temperature cycles*

Seamless tube provides the best choice for arrester housings

- *Ultimate structural integrity throughout the arrester housing compared to other methods (wrap / cage)*
- *Precision dimensional control for tighter tolerance*

Proprietary blended silicon rubber fully encapsulates arrester stack.

- *Hermetically sealed*
- *No chance of air/water ingress*
- *Sheds sized and shaped for optimized insulating properties*

Isolator bracket constructed using high strength fiberglass

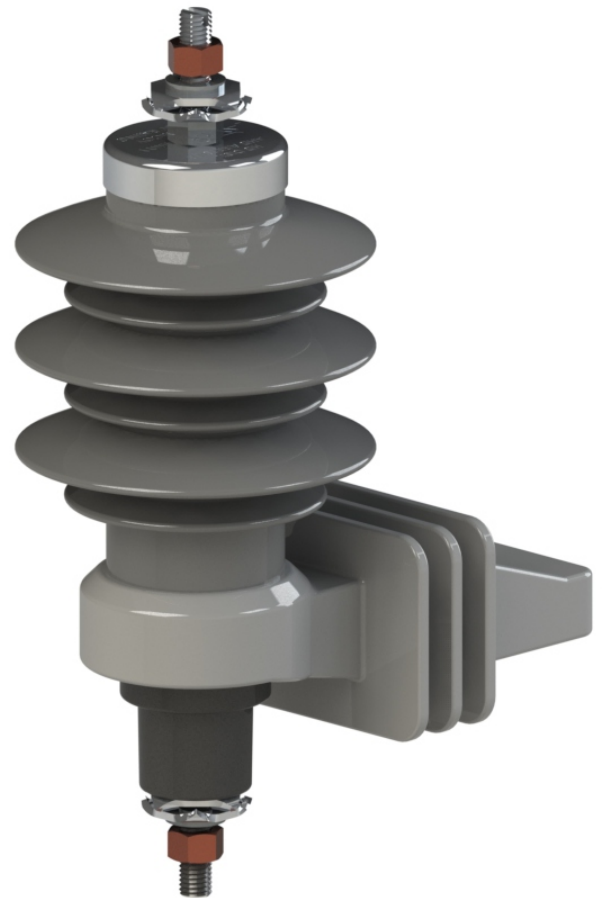
- *UV resistant*
- *Flame resistant*
- *Solid body*
- *Universal design for size interchangeability*
- *Three sizes available*

Ground lead disconnect meets all of the most current IEEE testing requirements

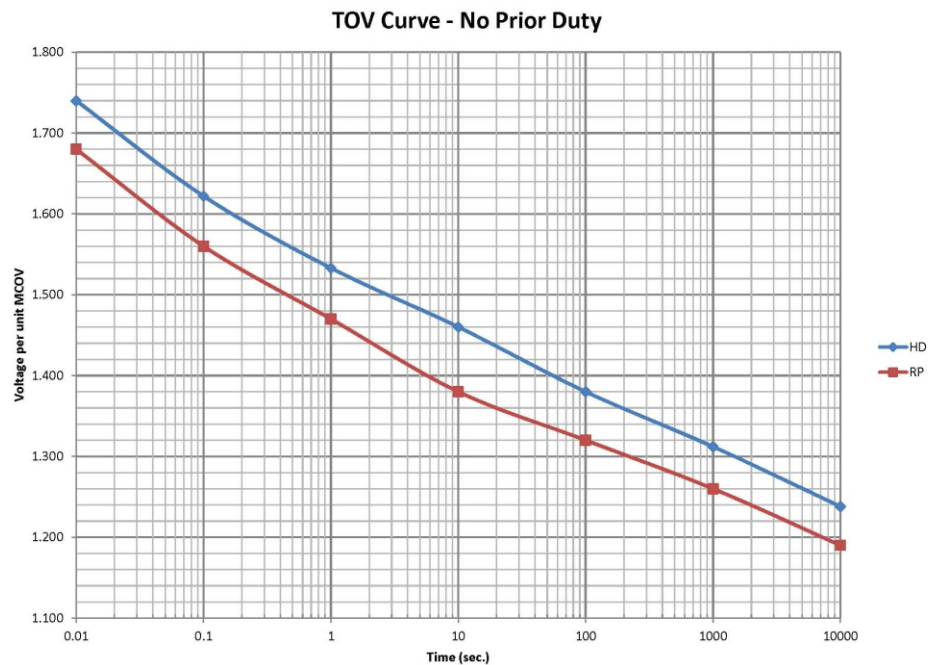
- *External mount for easier identification of operation*
- *No wrench design to alleviate potential damage*
- *Superior low current performance*

Optional wildlife protector allows for isolation of connections

- *UV resistant*
- *Impact resistant*
- *High Profile for maximum internal volume*

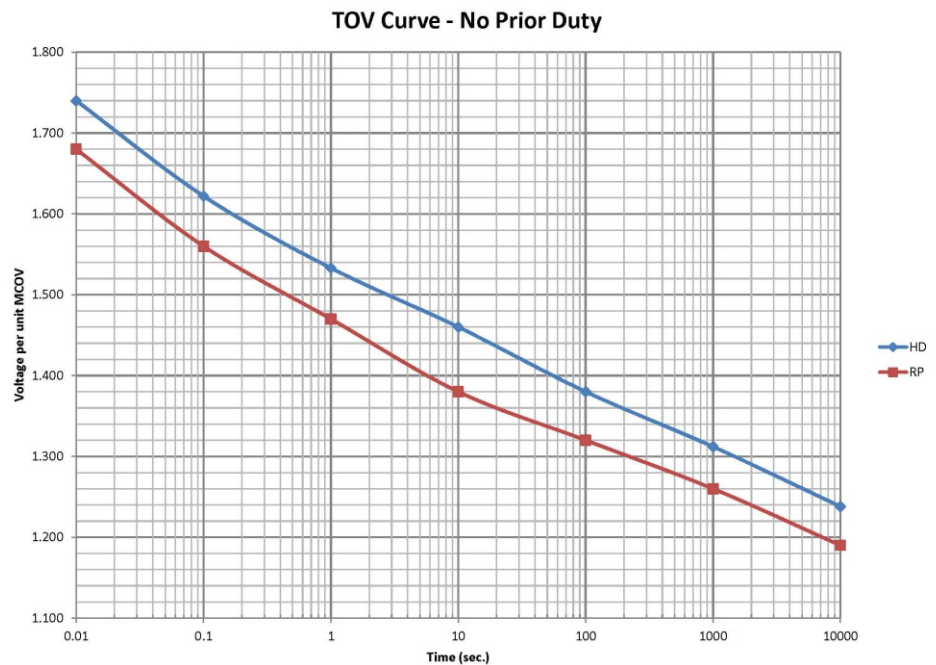


Heavy Duty Arrester Characteristics



Rated Voltage	MCOV	FOW	Switching	Lightning - 8/20					
				1.5kA	3kA	5kA	10kA	20kA	40kA
3	2.55	10.3	7.5	7.8	8.4	8.7	9.4	10.7	12.5
6	5.1	20.4	14.9	15.6	16.8	17.2	18.6	21.2	24.8
9	7.65	30.5	22.2	23	24.9	25.7	27.8	31.7	37.2
10	8.4	33.8	24.1	25.2	27.1	28.3	30.7	34.8	40.8
12	10.2	40.4	29.2	30.4	32.8	34.1	37	42.2	49.4
15	12.7	50.5	36.5	38.1	41	42.8	46.2	52.7	61.7
18	15.3	60.6	43.4	45.3	49.2	51	55.4	63.2	73.9
21	17	70.7	51.1	53.1	57	59.4	64.5	73.6	86.1
24	19.5	80.8	58.4	60.8	65.2	67.8	73.6	84	98.4
27	22	90.9	65.7	68.4	73.4	76.4	82.8	94.6	110.8
30	24.4	101	74	75.6	80.8	85	94	105.5	124
33	27	111.1	81.4	85.1	90.4	93.5	103.4	115.5	136.4
36	29	121.2	88.8	90.7	97.1	102	112.8	126	148.8

Riser Pole Arrester Characteristics

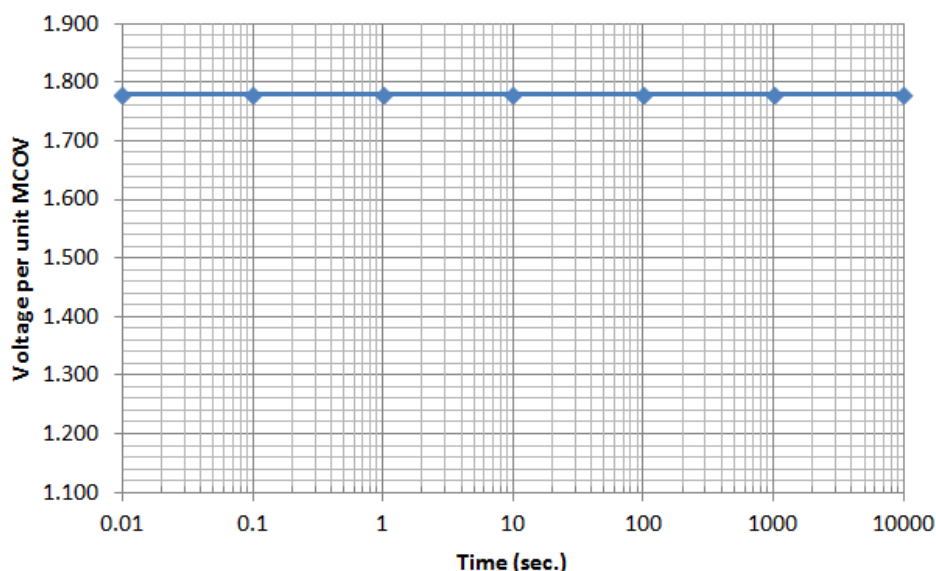


Rated Voltage	MCOV	FOW	Switching	Lightning - 8/20					
				1.5kA	3kA	5kA	10kA	20kA	40kA
3	2.55	9.4	7.1	7.2	7.7	8.1	8.8	9.9	11.7
6	5.1	18.8	14.2	14.4	15.2	16.2	17.6	19.8	23.4
9	7.65	27.1	18.5	21	22.3	23.4	24.8	28.1	32.5
10	8.4	29.5	22	23.1	24.5	25.6	27.1	31	35.8
12	10.2	35.7	26.3	28.2	29.4	30.5	32.5	36.5	42.6
15	12.7	44.5	32.7	34.1	35.3	37.6	40.3	45.6	53
18	15.3	54.3	38.8	41.2	43.6	44.9	49	55.4	63.5
21	17	61	45.6	46.8	49.2	51.8	56.1	63.5	73.7
24	19.5	70.3	51.3	54.1	56.5	60.2	65	73.4	84.9
27	22	79.2	58	60.8	64.5	67.6	72.5	82.6	95
30	24.4	88.6	64.3	67.9	72.1	75.3	81.5	91.4	107.1
33	27	97.5	72.2	74.8	79.5	82.2	90	100.5	116.3
36	29	105	76.3	80.5	85.5	89.4	96.5	110	126.5

“Titan” Arrester Characteristics

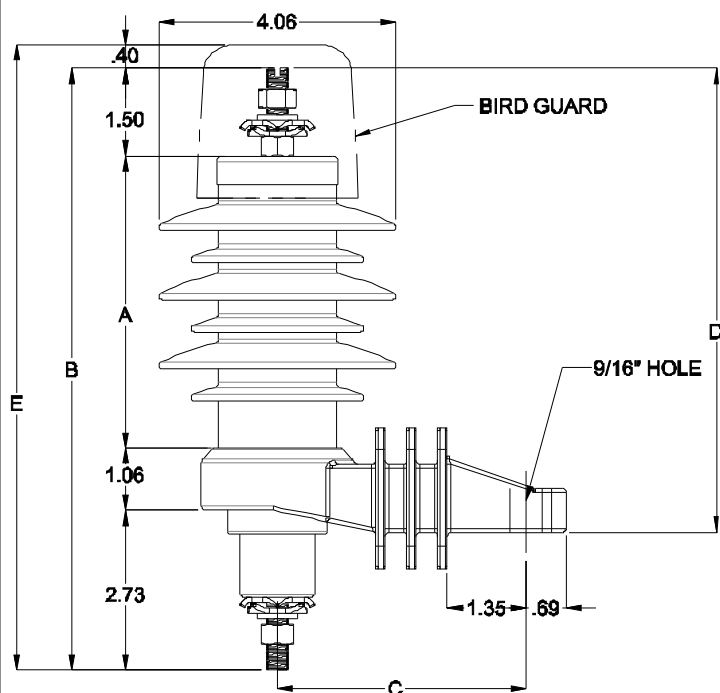


TOV Curve - No Prior Duty



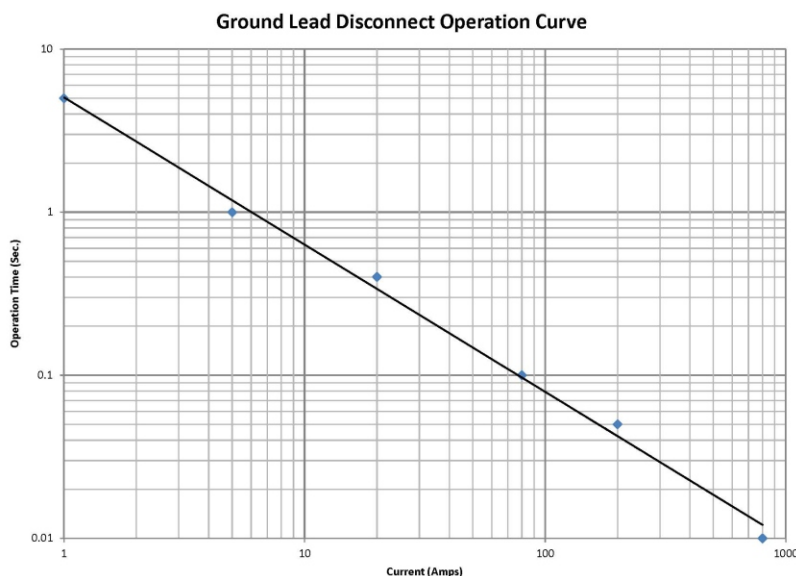
Rated Voltage	MCOV	Min 60 Hz Sparkover	FOW	Switching	Lightning - 8/20					
					1.5kA	3kA	5kA	10kA	20kA	40kA
3	2.55	4.6	20	7.5	7.8	8.4	8.7	9.4	10.7	12.5
6	5.1	9.1	23	14.9	15.6	16.8	17.2	18.6	21.2	24.8
9	7.65	13.6	32.4	17.8	18.9	20.1	21	22.9	25.4	28.6
10	8.4	15	32.4	19	20	20.9	22.3	24.3	26.9	30.3
12	10.2	18.2	52.4	23.8	25.2	26.8	28	30.6	33.8	38.1
15	12.7	22.6	55.4	28.8	30	32.3	35	38.3	43.6	51
18	15.3	27.2	64.8	35.7	37.8	40.3	42.1	45.9	50.7	57.1
21	17	30.3	64.8	37.8	40	43.1	46.1	50.5	57.6	67
24	19.5	34.7	87.8	43.8	46.2	50	53.2	58.1	67	78
27	22	39.2	97.2	50.8	53.8	57.4	60	65.4	72.3	81.6
30	24.4	43.4	117.2	55.3	58.6	63.2	67.7	74	85	98
33	27	48.1	120.2	62.8	66.6	71.7	77	84	96	115
36	29	51.6	129.6	66.4	70.4	76	81	89	102	118

Arrester Characteristics



Ground Lead Disconnect Curve

The Aluma-Form Ground Lead Disconnect (GLD) will operate efficiently down to 1 amp. Our GLD will operate in under 1 second at 5 amps. It will also operate in under 5 seconds at 1 amp. The following curve (below) shows the operating range of our GLD.

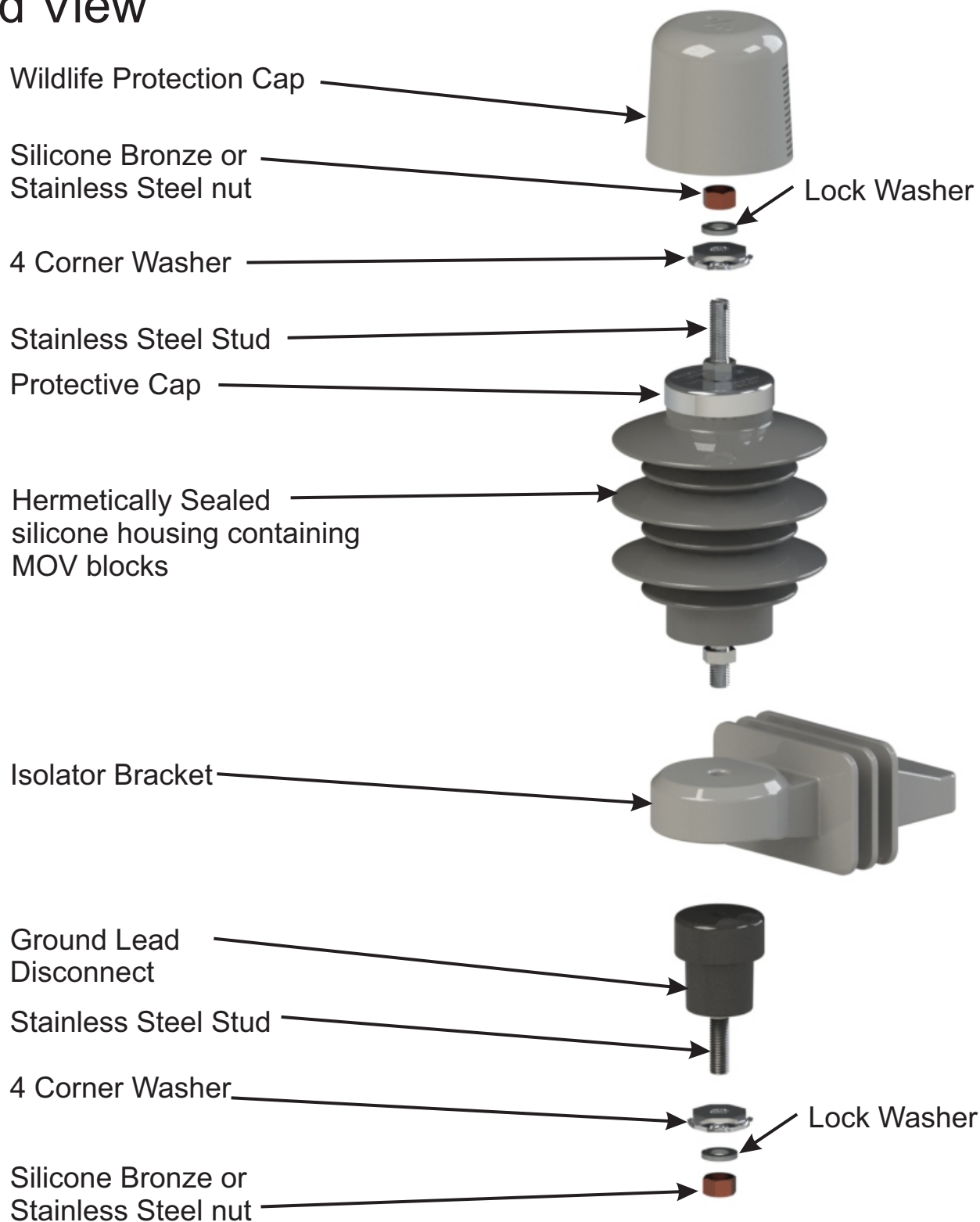


Catalog Name	Voltage Rating	Creepage (Inches)	Housing	Housing Length "A"	B	C	D	E	Weight (lbs)	Isolator Bracket
AHD-03**	3	9.1	A	3-13/16	9-1/8	4.25	6-5/8	9-9/16	2.9	1
AHD-06**	6	13.4	B	5	10-5/16	4.25	7-13/16	10-3/4	3.1	1
AHD-09**	9	13.4	B	5	10-5/16	4.25	7-13/16	10-3/4	3.2	1
AHD-010**	10	13.4	B	5	10-5/16	4.25	7-13/16	10-3/4	3.2	1
AHD-012**	12	17.3	C	6-1/2	11-7/8	5	9-3/8	12-5/16	4.2	2
AHD-015**	15	25.2	D	8-13/16	14-15/16	5	12-7/16	15-3/8	4.5	2
AHD-018**	18	25.2	D	8-13/16	14-15/16	6	12-7/16	15-3/8	4.5	3
AHD-021**	21	29.1	E	10	15-1/4	6	12-3/4	15-3/4	5.1	3
AHD-024**	24	33.5	F	11-1/4	16-1/2	6	14	16-7/8	5.5	3
AHD-027**	27	33.5	F	11-1/4	16-1/2	6	14	16-7/8	5.5	3
AHD-030**	30	42.3	G	13-3/4	19-5/16	6	17	19-3/4	6.5	3
AHD-033**	33	42.3	G	13-3/4	19-5/16	6	17	19-3/4	6.5	3
AHD-036**	36	49.4	H	15-11/16	20-15-16	6	18-7/16	21-3/8	7.8	3

** For riser pole change "AHD" to "ARP"

Heavy Duty & Riser Pole Arresters

Exploded View





ALUMA-FORM®

Distribution Arresters

Heavy Duty & Riser Pole Arresters

AHD-10B-1GX-4X1-4X-B

Arrester Type

AHD = Arrester Heavy Duty

ARP = Arrester Riser Pole

*Add a -T for Titan or -D for Directional

kV Rating of Arrester

03 - 3kV 15 - 15kV

06 - 6kV 18 - 18kV

09 - 9kV 21 - 21kV 30 - 30kV

10 - 10kV 24 - 24kV 33 - 33kV

12 - 12kV 27 - 27kV 36 - 36kV

Housing Size

A - Hsg A (3kV)

B - Hsg B (6, 9, 10kV)

C - Hsg C (12)

D - Hsg D (15 & 18kV)

E - Hsg E (21kV)

G - Hsg G (30 & 33kV)

F - Hsg F (24 & 27kV) H - Hsg H (36kV)

Isolator Bracket Size

1 - Size 1 Isolator (3 - 12kV)

2 - Size 2 Isolator (15 - 24kV)

3 - Size 3 Isolator (27 - 36kV)

Ground Lead Disconnect

G - with GLD

X - without GLD

Mounting Bracket options

A - Nema A Crossarm

T - Top Mount Crossarm Bracket

B - Nema B Crossarm

X - No Bracket

C - Transformer, small

D - Transformer, medium

E - Transformer, large

Hardware (Top of Arrester)

1 - Std nut, 4-corner, flat wash., lock wash.

2 - Std nut, two 4-corner, lock wash.

3 - Si Bronze nut, 4-corner, flat wash., lock wash.

4 - Si Bronze nut, two 4-corner, lock wash.

5 - Std nut, lock wash., flat wash.

6 - Std Bronze nut, lock wash., flat wash.

X - No hardware

Line Lead (Top of Arrester)

A - 18" #6 Insulated Wire Lead, strip 1.25" both ends

B - 18" #6 Insulated Wire Lead, strip 1.25"/ ring term.

C - 18" #6 Insulated Wire Lead, 2 ring term.

D - Overhead Primary Tap - #2-556 Al or Cu

E - 84" #6 Insulated Wire Lead, strip 1.25"/ ring term

F - 12" #4 Tinned Copper Braided Conductor

X - No line term. wire

Additional Options

B - Boss Mounting Hardware (only with mounting brackets options C, D & E)

W - Wildlife Isolator Bracket Cover

Ground Lead (Bottom)

A - 18" #6 Insulated Wire Lead, strip 1.25" both ends

B - 18" #6 Insulated Wire Lead, strip 1.25"/ ring term.

C - 18" #6 Insulated Wire Lead, 2 ring term.

D - 12" Copper Strap

X - No ground term. wire

Hardware (Bottom)

1 - Std nut, 4-corner, flat wash., lock wash.

2 - Std nut, two 4-corner, lock wash.

3 - Si Bronze nut, 4-corner, flat wash., lock wash.

4 - Si Bronze nut, two 4-corner, lock wash.

5 - Std nut, lock wash., flat wash.

6 - Si Bronze nut, lock wash., flat wash.

X - No hardware

Top (options)

1 - Wildlife protection cap

2 - Flipper fuse kit

X - No option



ALUMA-FORM®

Distribution Arresters

Line Lead Option



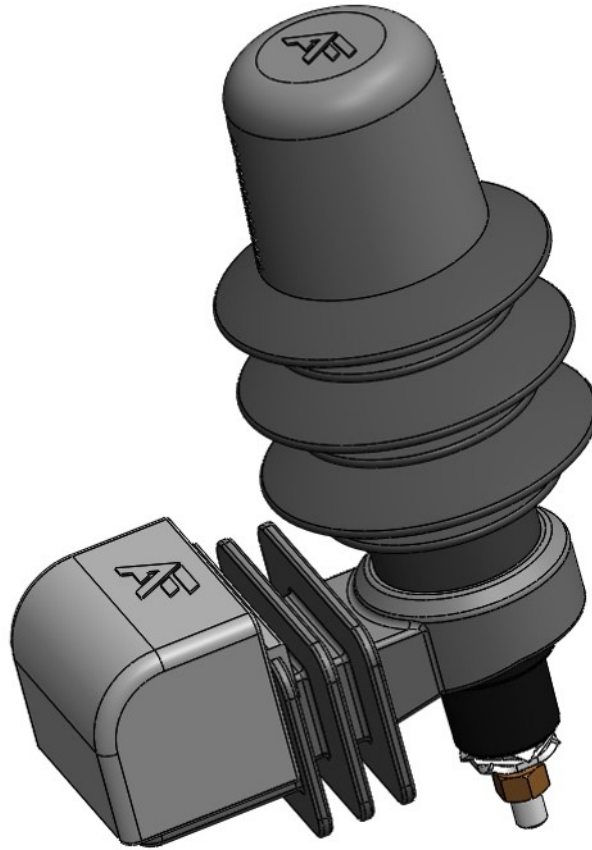
Overhead Primary Tap
#2-556 Al or Cu



ALUMA-FORM®

Distribution Arresters

Isolator Bracket Cover Option



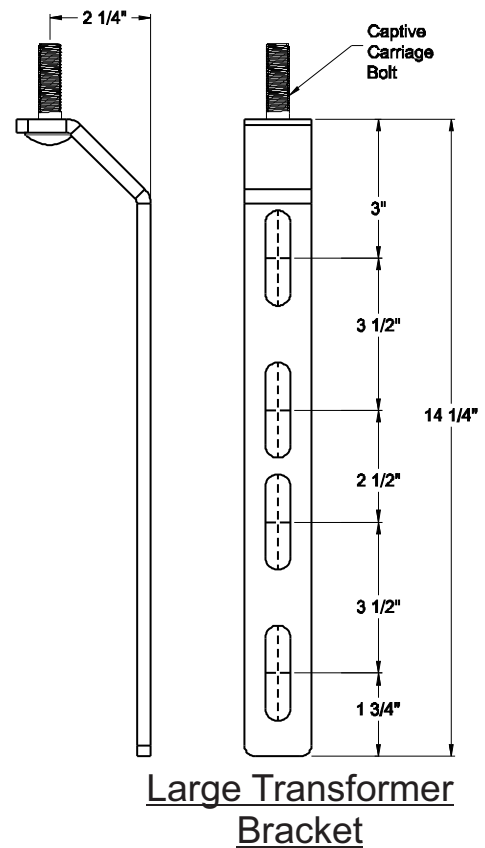
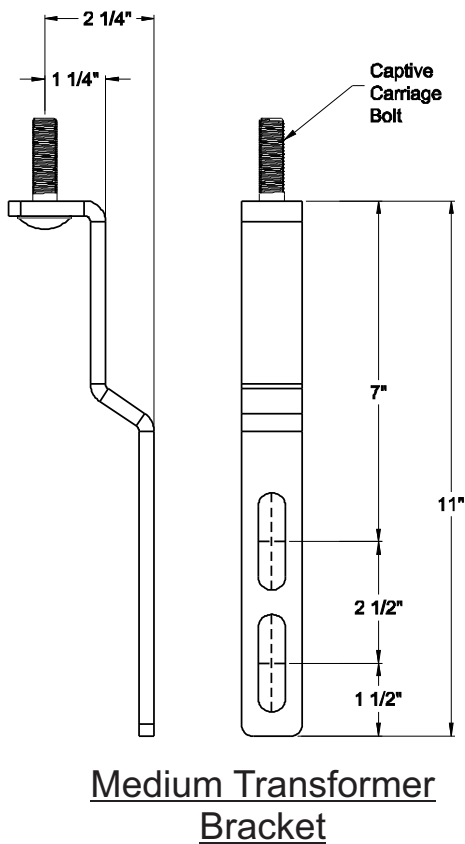
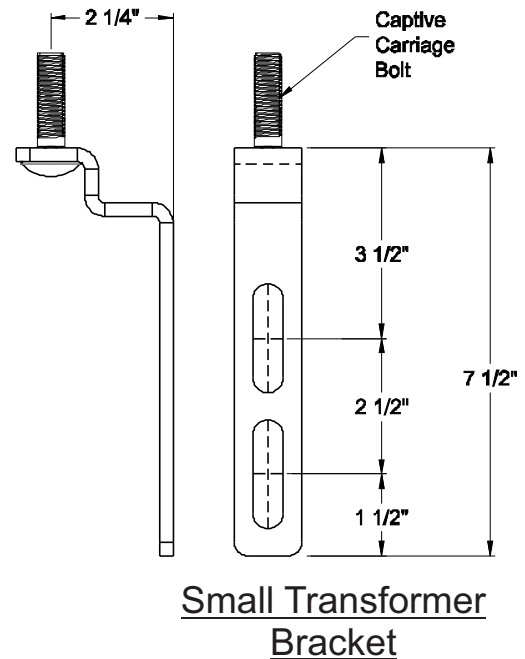
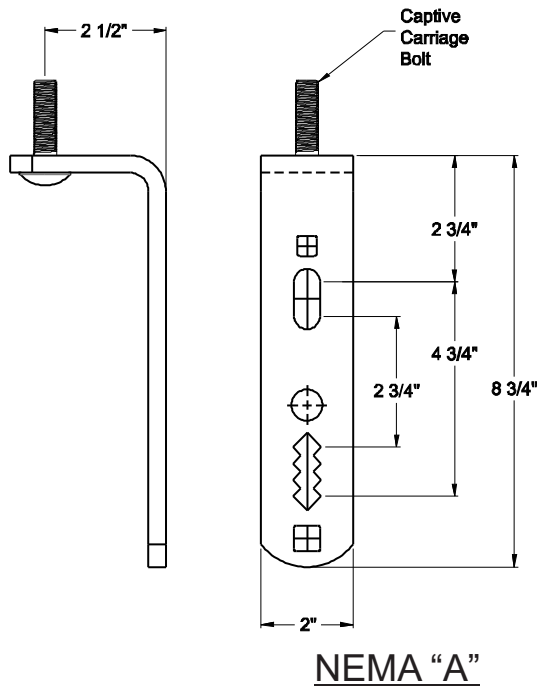
Covers bolt head on isolator bracket connection to prevent wildlife from using as a grounding point.



ALUMA-FORM®

Distribution Arresters

Arrester Mounting Options





ALUMA-FORM®

Cutout / Arrester Combo



-----Cutout Style-----

-----Arrester Style-----

C	P	G	1	-	1	-	1	-	E	B	-	1	-	H	10
Cutout	Porcelain Silicone	Galv Stainless Steel	1= 15KV 2 =27KV 3 = 35KV**		1 =100A 2=200A 3=300A		1=110 bil 2=125 bil 5=150 bil		Connector S=Small Eye E=Large Eye C=Clam Shell N=None	Bracket B=Nema B X=Extended B N=None		1=10kA (15kv) 2=12kA (27kv) 6=16kA (15kv) 8=8kA (27kv)		H=Heavy Duty R=Riser Pole	03=3kV 06=6kV 09=9kV 10=10kV 12=12kV 15=15kV 18=18kV 21=21kV 24=24kV 27=27kV 30=30kV 33=33kV 36=36kV

*Please note that the arrester style for the combo unit is our standard arrester housing and isolator bracket with a ground lead disconnect, wild life protection cap, no line or ground lead and with the following hardware on top and bottom: SS nut, 4-corner, flat washer, lock washer.

**Different styles and configurations can be ordered. Please contact you regional sales manager or sales agency for details.